

Hall Ticket Number:

--	--	--	--	--	--	--	--	--	--	--	--	--	--	--	--	--	--	--	--

Code No. : 21411

**VASAVI COLLEGE OF ENGINEERING (Autonomous), HYDERABAD**  
**B.E. (Mech. Engg.) II Year I-Semester (Main & Backlog) Examinations, Nov./Dec.-2016**

**Machine Drawing**

Time: 3 hours

Max. Marks: 70

*Note: Answer ALL questions in Part-A and Part-B*

**Part-A (10 × 2 = 20 Marks)**

1. Name the features which should not be shown hatched, when they are sectioned longitudinally.
2. What do you understand by revolved and removed sections?
3. List out the elements of a dimension line.
4. Sketch examples of counter-bore and counter-sunk.
5. Sketch conventional representation of the following:  
a) External threads      b) Internal threads
6. Sketch two commonly used locking devices for nuts.
7. What is a feather key and what are its uses?
8. Define the following terms used in riveted joints:  
a) pitch      b) margin
9. Differentiate between a cotter joint and a pin joint.
10. Sketch two views of a hexagonal nut for a bolt of 20 mm dia.

**Part-B (1 × 50 = 50 Marks)**

11. Assemble all parts of the **Eccentric** given in figure and draw half-sectional front view (with upper half in section) and left side view.

Refer overleaf for figure

Contd... 2

Code No. : 21411

:: 2 ::

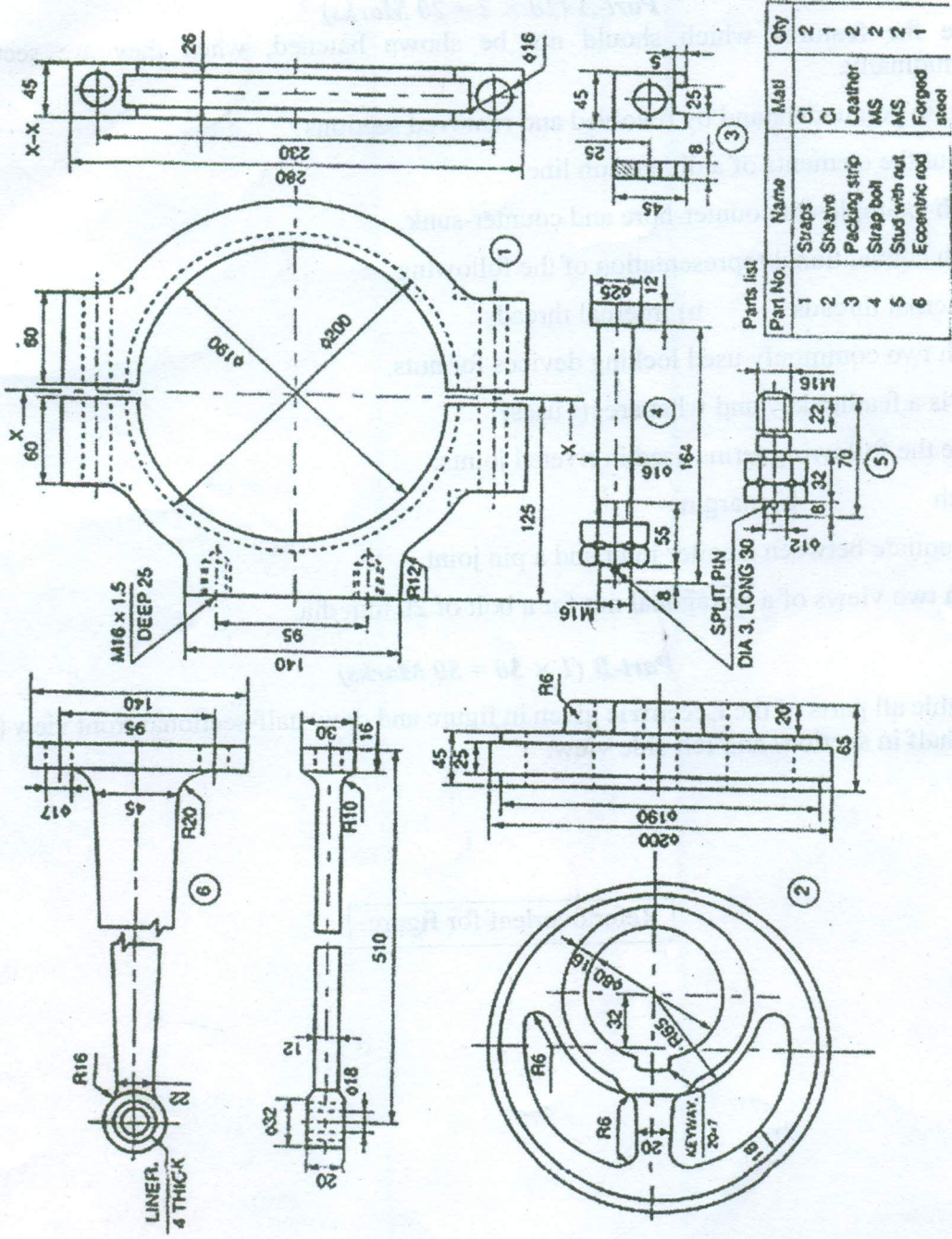


Fig. Eccentric